



GSM-RELAY MANUAL



SHANGHAI WAFER MICROELECTRONICS CO.,LTD

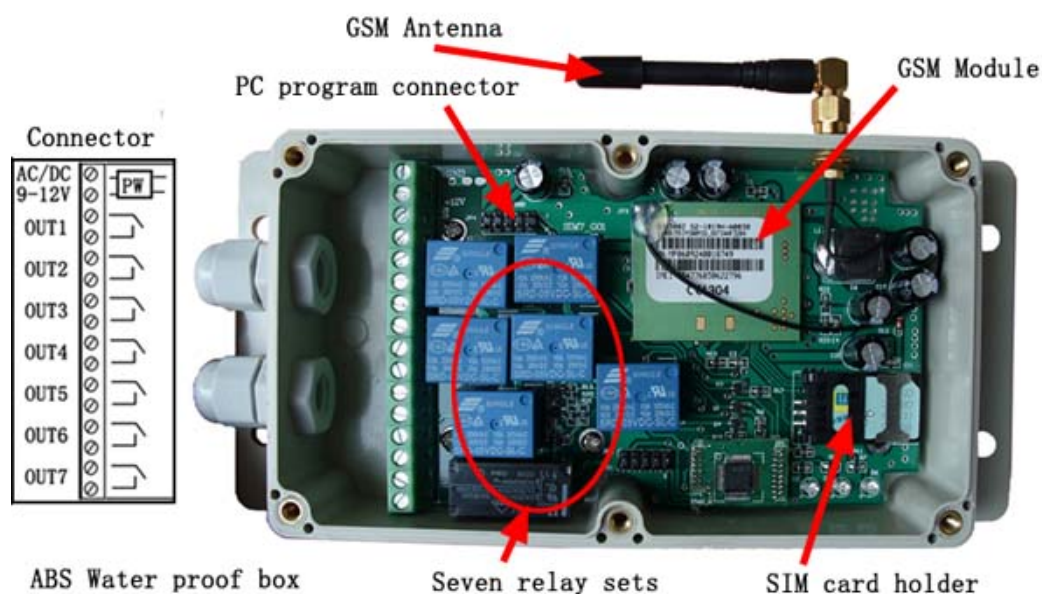
<http://www.waferstar.com>

GSM-RELAY OPERATING INSTRUCTIONS

PRODUCT DESCRIPTION

WAFER GSM-RELAY is an electronic board with an on-board GSM modem. The purpose of this device is to do the real time and interactive GSM remote control by means of a GSM phone.

CONNECTOR DESCRIPTION



OUT1 is activated by the phone calling and others is activated by the SMS instruction

ADVANTAGES OF WAFER GSM-RELAY

- ✓ 7 channels 230V 10A 50Hz relay contacts.
- ✓ No call charges to operate from phone calling.
- ✓ Work with GSM phones calling and SMS.
- ✓ Relay operates almost every appliance.
- ✓ Remote password operation and also password change.
- ✓ Optional relay working mode.
- ✓ One relay output with the calling mode and others with the SMS to control
- ✓ Caller ID confirmation for security.
- ✓ Quick & easy number barring.
- ✓ Can be operated from anywhere.
- ✓ Easy programming in minutes with your phone or PC software

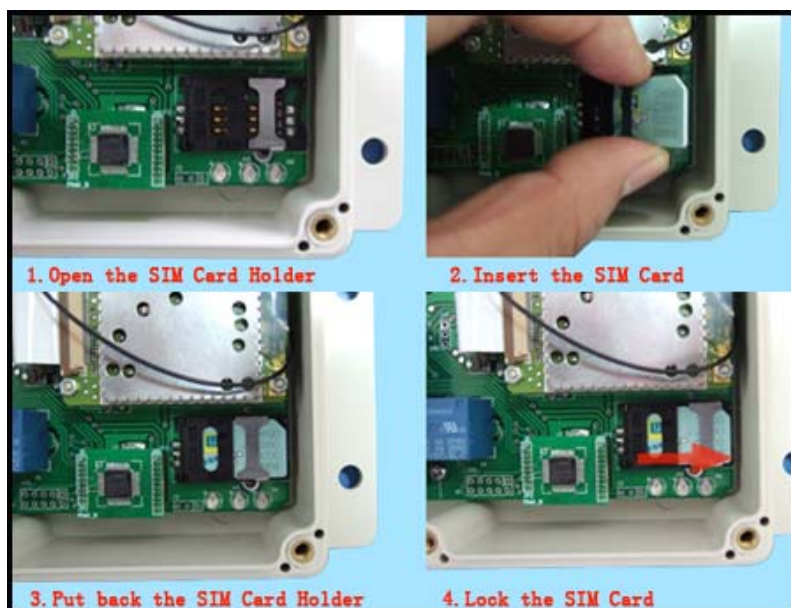
INSTALLATION

To install the GSM-RELAY, you need to power on the board with AC/DC 9V-12V. and also connect the relay output according to your project. The relay contacts can stand **230V 10A maximum**, this is enough for its operation but **don't try to switch higher voltages or currents**. You should install the GSM-RELAY in a place where there is GSM signal coming from the

operator you want to use. Check it with a phone before proceeding with the installation. If you need to install the device in a place with little signal, you may consider using an external antenna that we may supply as an option to be purchased separately with 50cm cable.

You should then insert the SIM Card of the operator you want to use with the right direction according to the following pictures.

!Note! : You must remove the PIN request from the SIM before inserting it in the unit, otherwise the device will not work. In order to do so, insert the SIM in a phone and disable the PIN request (usually there is a security menu that enables you to do so).



1. Slide back the SIM door and lift it up
2. Slide the SIM Card into the SIM door making sure that the clipped corner of the SIM card lines up with the clipped corner of the SIM holder
3. Close the SIM door
4. Slide the SIM door to lock the SIM card in place

WAFER GSM-RELAY PROGRAMMING

You can program the GSM-RELAY with SMS commands using your phone. It is safe to do so because in addition to the fact that other people may not know the number of the SIM inserted in it, we also use a Password that makes it impossible for anybody who doesn't know it to access the system by chance.

Remember that commands must be CAPITAL LETTERS. It is PWD not pwd, CAP not Cap etc. Don't add spaces or any other character.

Some complicated Instructions, that can't be programmed by the phone SMS. That would need to use the PC software to program and inquiry the status of the terminal.

The below wire picture is to show how to connect the cable to the PC program connector with the Program adapter. Please connect it in the right direction with the picture.



The following command is used in the GSM-RELAY :

#PWD:	Password
#CAP:	Change password
#WHL:	White List (add or remove numbers)
#GOT:	Relay working output delay time
#ALARM:	Alarm information setting
#MODE:	Relay mode
#CSQ:	Check Signal Quality
#SCA:	Set service center address
#STATUS:	Check status

Once you issue a command with an SMS, you will receive a confirmation SMS with OK if everything is correct or Err if there is an Error.

GSM-RELAY SMS COMMAND LIST:

#PWD Password.

This command must always come first 6 digits as a password.

The standard default one, when the device comes from the factory, is 123456.

We suggest that you change it, using the #CAP command.

In all the following examples we will use 123456 as an example of password.

#CAP Change Password.

Use this command to change the password with a new one that you will chose for your device (don't forget it or you will have to send the unit back to us to reset it, and this has a cost)

The #CAP command must be issued 2 times to be sure you don't digit a wrong one.

OF course it must be preceded by the old password.

For example, to change the password 123456 into the new password 333444 you need to send the following SMS:

#PWD123456#CAP333444#CAP333444

Acknowledge SMS: PWD SETUP OK

If you wrote correctly, or an Error message if you made a mistake.

If the old password is error,then conformation would be : Error Old Password

If you input two different new password,then reply would be : Error New Password,Please Check the input again

#WHL White List.

This is the command that you will use most. it is used to add or remove numbers that are enabled to control the relay sets into the White List. You can add up to 200 numbers in the list. Every position must be indicated in the command and we advise you to keep a list written somewhere to know which numbers are in and in which position.

- To add a number, the syntax of the command is the following:

#PWD123456#WHL01=61143815

Acknowledge **would be : WHL01 SET TO 61143815 OK**

Where 01 is the position in the list and 61143815 is the number enabled.

Please note that it is possible to program up to a maximum of 10 digits for a number. If it has more digits you should use the rightmost ones. For example, if your number is 33446665555 you should program 3446665555. If your number appears as +85261143815 you should not program the country code (+852). If your number has only 9 digits or less, it is not a problem. The important thing is that you don't exceed 10 digits.

- To check which is the number in a place of the list:

#PWD123456#WHL01?

Acknowledge : **WHL01 IS 61143815 OK**

- To erase a number:

#PWD123456#WHL01=0000000

(or you can write over it another number you wish to add)

Acknowledge : **WHL01 SET TO 00000000**

List All numbers in the List

#PWD123456#WHL=ALL? (PC)

Acknowledge :

WHL01 IS XXX

WHL03 IS XXX

WHL08 IS XXX

.....

#GOT *Relay working output delay time.*

This command is useful in case you need to keep the Relay output working longer. The standard time is 0,3 seconds (300 ms). You can change it with the GOT command.

- The syntax of the command is the following:

#PWD123456#GOT500 (PC\$PHONE)(Only for NO.1 Relay)

Acknowledge: **DELAY TIME SET TO 0500MS**

With the above command the delay time has been set to 500 ms (0,5 seconds).

- You can check what the current relay output delay time is with the command

#PWD123456#GOT? (PC\$PHONE) (Only for NO.1 Relay)

Acknowledge: **DELAY TIME IS 0500 MS**

#MODE Relay Operation Mode SETUP (PC\$PHONE) (Only for NO.1 Relay)

#PWD123456#MODE0

Acknowledge: **RELAY SET TO MODE0**

#PWD123456#MODE1

Acknowledge: **RELAY SET TO MODE1**

If set to MODE0, that is Momentary pulse and If Config to MODE1, that is Ratchet relay

#OUT Relay output control

(1)ON the relay output contact

#PWD123456#OUTX=ON (PC\$PHONE)

Where X is the number of the relay in the list (X is from 1 to 7)

Acknowledge: **OUTX ON OK**

(2)OFF the relay output contact

#PWD123456#OUTX=OFF (PC\$PHONE)

Where X is the number of the relay in the list (X is from 1 to 7)

Acknowledge: **OUTX OFF OK**

(3)ALL the relay control at the same time

#PWD123456#OUT=1101011 (PC\$PHONE)

Where the number is 1 or 0 to ON or OFF the relay.

Acknowledge: **#PWD123456#OUT=1101011 OK**

(3)Check the relay status

#PWD123456#OUT? (PC\$PHONE)

Check the status of all the relay

Acknowledge: **OUT 1110000 (the Number "1" means RELAY ON and "0" means RELAY OFF)**



#CSQ Check GSM signal quality. (PC\$PHONE)

This command is useful to see what is the GSM network signal level your GSM-RELAY is receiving. It ranges from 0 to 32 (if it is 0 we doubt it will ever answer...). You should have a signal above 12 to be sure of being able to control the relay sets in any condition. Better if above 16. You should add an external antenna if this is not the case, or eventually even change operator with another that serves your area better.

#PWD123456#CSQ?

Acknowledge: **CSQ IS 26**

#SCA Service center address

If you want the GSM-RELAY to be able to send an SMS you should tell it what is the number of the SMS service center. Most of the times the unit answers anyway because it gets it from the SIM. Sometimes this doesn't happen and you have to program it. For example, We use the service center number +85290100000.

You should ask your operator with is their SMS service center number. You can see it in your phone in the SMS settings (if you use th esame operator).

• To program the service center number for GSM-RELAY we use the following command:

#PWD123456#SCA+85290100000

(Normally don't need to use and test the instruction)

Troubleshooting

No LED is on after power up

- Check the power supply.

GSM LED is not flash slowly

- GSM Signal is not good and cann't register to GSM
- Check the SIM card.
- Check the PIN.
- Check the antenna connection.
- Select a place with a good GSM signal.

MCU LED is not flash slowly

- MCU is not working properly,Check the syster power

No tone can be heard after line off-hook

- Check the telephone line connection.
- GSM-RELAY is not initialized properly upon start (approx. 10s after power up).
- GSM-RELAY is not supplied with power.

GSM-RELAY does not communicate with PC

- Check the serial cable connection.
- Check the COM number setting on PC.
- Check the COM parameters (1200-115200 bps, 8N1).
- An incoming call is ringing on GSM-RELAY
- An incoming Alarm is on processing by GSM-RELAY

This brochure provides an overview of the products and services of WEIFU GSM Modules, For further information and queries kindly contact:

Email: coinco_cn@yahoo.com.cn

Web: www.waferstar.com

Tel: 0086-21-51870528

Also accessible via our online MSN service: frank_ic2001@hotmail.com